



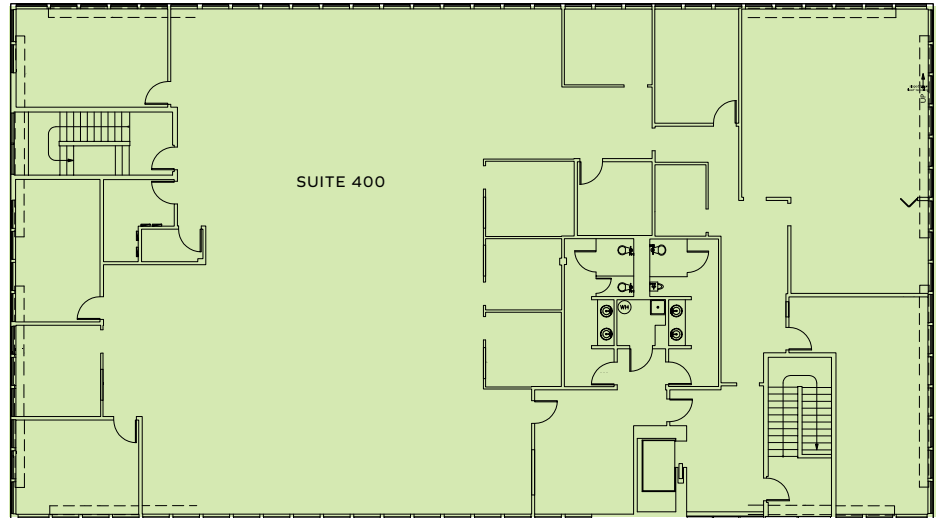
612 Building

612 WOODLAND SQUARE LOOP SE, LACEY, WA

FLOOR 4

±7,950 SF

SUITE 400



EXCLUSIVELY
LEASED BY

Evan Parker
Kidder Mathews
360.705.0174
evan.parker@kidder.com

Terry Wilson
Coldwell Banker Commercial
360.789.5060
terry.wilson@cbolympia.com

Owned By



Leasing By



COLDWELL BANKER
COMMERCIAL
EVERGREEN OLYMPIC
REALTY, INC.

KIDDER.COM
HUBATLACEY.COM

This information supplied herein is from sources we deem reliable. It is provided without any representation, warranty, or guarantee, expressed or implied as to its accuracy. Prospective Buyer or Tenant should conduct an independent investigation and verification of all matters deemed to be material, including, but not limited to, statements of income and expenses. Consult your attorney, accountant, or other professional advisor.