



# 640 Building

640 WOODLAND SQUARE LOOP SE, LACEY, WA

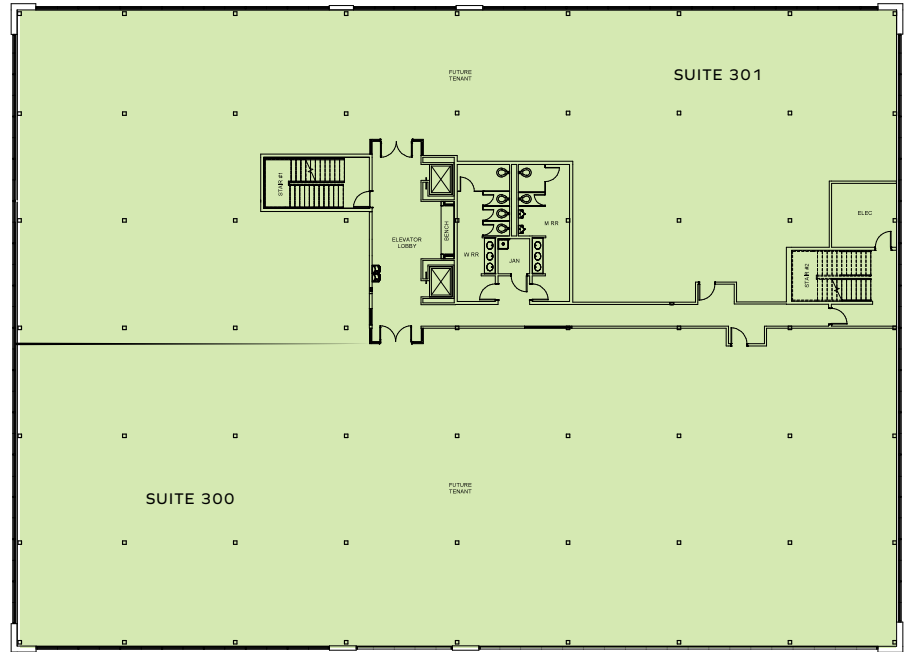
## FLOOR 3

**10,522 SF**

SUITE 300

**10,522 SF**

SUITE 301



EXCLUSIVELY  
LEASED BY

**Evan Parker**  
Kidder Mathews  
360.705.0174  
evan.parker@kidder.com

**Terry Wilson**  
Coldwell Banker Commercial  
360.789.5060  
terry.wilson@cbolympia.com

Owned By



Leasing By



COLDWELL BANKER  
COMMERCIAL  
EVERGREEN OLYMPIC  
REALTY, INC.

KIDDER.COM  
HUBATLACEY.COM

This information supplied herein is from sources we deem reliable. It is provided without any representation, warranty, or guarantee, expressed or implied as to its accuracy. Prospective Buyer or Tenant should conduct an independent investigation and verification of all matters deemed to be material, including, but not limited to, statements of income and expenses. Consult your attorney, accountant, or other professional advisor.